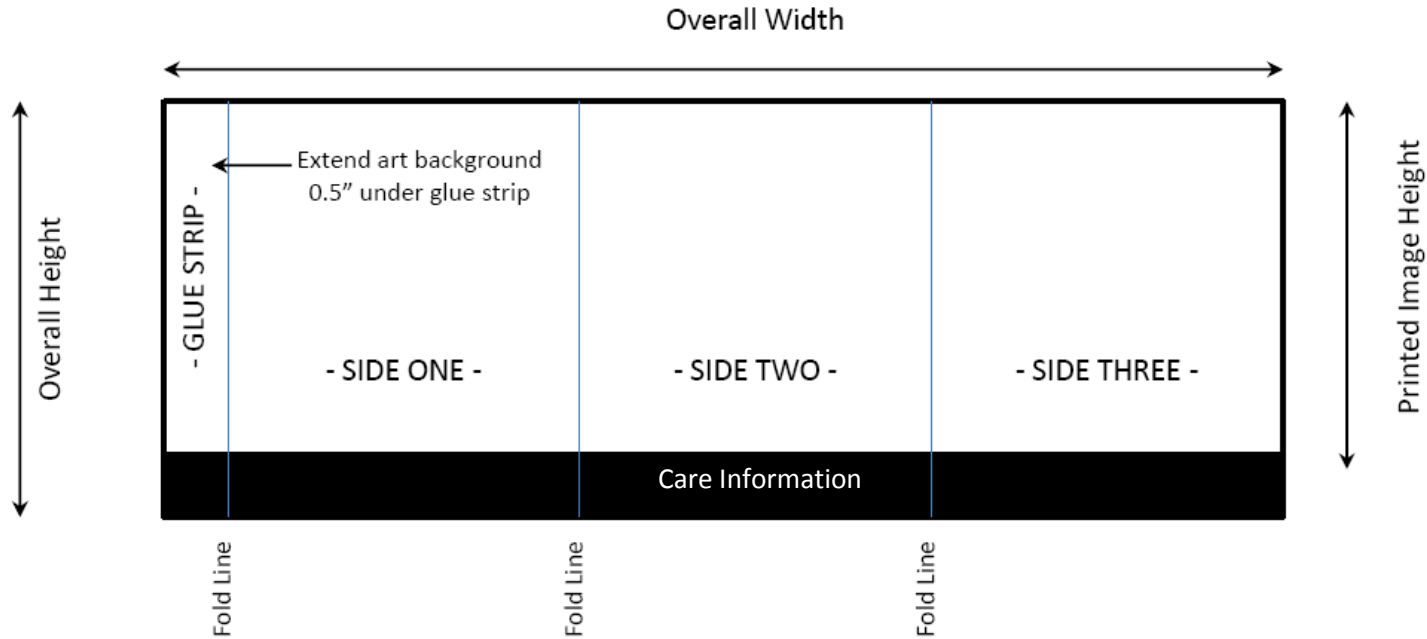


# Art Template Instructions EG-200



Art is in four color process. Layout may be three different designs (one per container side), or may be one continuous wrap around design. Please note to extend art background into glue strip on left side.

Submit artwork in PDF format in highest resolution as possible (minimum 300 DPI) to: [Liveprom@att.net](mailto:Liveprom@att.net).

Dimensions	Width			Height		
	Glue Strip	Each Side (3X)	Overall Width	Image Height	Care Info	Overall Height
EG-200	0.50"	3.50"	11.00"	3.00"	0.50"	3.50"

The care information segment may be implemented into the overall art layout, by altering the colors, font and/or layout, as long as the pertaining information is incorporated. Templates reflect the indicated info.